

# Luma 1360

## Instructions

Remove the fire from the packing, checking that neither the heater nor the power cable has been damaged during transport. Do not operate the heater if damaged. The accessories are found in a box that is packed at the side of the fire. Your fire is guaranteed for one year from the date of purchase. In the unlikely event of a breakdown you have access to our customer services team, simply call **01543 251122** during office hours, 9am – 5pm or e-mail on [info@flameritefires.com](mailto:info@flameritefires.com)

### INSTALLATION OF THE FIRE

Where a chimney is not blocked off completely it will cause the heater to cut out during use. If you are not sure that you have cut off the draw 100% from the chimney, we recommend covering the five banks of slots in the rear of the case and each bank at the top either side.

#### Electrical connections

Your appliance comes fitted with a plug that incorporates a 13A fuse. The replacement fuses must be 13A and ASTA approved. If the fuse cover is lost the plug must not be used until a replacement cover, of the same colour, is obtained from an electrical retailer. The appliance is fitted with a moulded plug, if it is necessary to cut off the plug for any reason, it must be discarded immediately with the fuse removed. Under no circumstances should any attempt be made to reuse the plug, do not insert into any 13A socket as this could cause a hazard. If the mains cable is damaged it must be replaced by the manufacturer or an authorised technical service centre.

#### WARNING THIS APPLIANCE MUST BE EARTHED

#### IMPORTANT

The wires in the mains lead are coloured in accordance with the following code.

|                   |         |
|-------------------|---------|
| Green and yellow: | EARTH   |
| Blue:             | NEUTRAL |
| Red:              | LIVE    |

As the colours of the wires in the mains lead of this appliance may not correspond with the colour markings in your plug proceed as follows: -

- The wire which is coloured green and yellow must be connected to the terminal in the plug which is marked with the letter E, or coloured green or coloured green and yellow, or marked with the earth symbol
- The wire which is coloured blue must be connected to the terminal in the plug which is marked with the letter N, or coloured black.
- The wire which is coloured brown must be connected to the terminal in the plug which is marked with the letter L, or coloured red.

**Important: The fire must be positioned so that the plug socket is accessible once the fire has been installed. In the unlikely event of breakdown access must be allowed for so that the fire may be serviced (DO NOT SEAL). This will involve the fire being removed from the wall in order to gain access to the rear. The mains cable must therefore be long enough to allow this. If the removal of the plug is absolutely necessary for installation, cut off in an area within 100mm only of the plug itself. Any further will affect your warranty. Where an inset fire is being used in an existing chimney, it is important that the chimney is blocked off to prevent airflow problems with the fire.**

#### Using as a Hang on the Wall.

The height at which you may wish to fix the fire to the wall is up to you, though we recommend anywhere from 40-60cm from the floor to the bottom of the fire. The wall bracket should be fixed to the wall with the highest point of the edge facing forward/upward **Fig.1**. The corresponding edge where the fire is to be hung on the wall bracket can be found on the back, at the top, across the fires centre. Once the wall bracket has been fixed, lift and hook the fire into place. A second bar should then be added to the underside of the fire **Fig.2**. A channel in the underside of the fire will be visible, the remaining bracket will slot into this. Again mark off, remove fire and fit the bracket to the wall. Refit the fire, lift and hook onto the brackets.

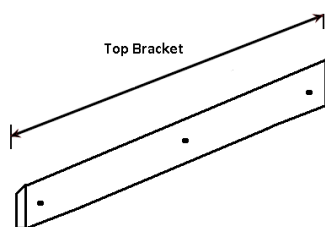


Fig. 1

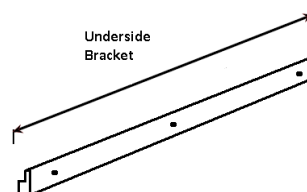


Fig. 2

**Fuel effect**

**White & Glass Pebbles:** Once the fire has been installed in the correct position unpack the pebbles from the accessory box and arrange on the orange fuel bed in a random formation.

**Log & Embers:** Once the fire has been installed in the correct position unpack the fuel effect from the accessory box. Place each piece as in the picture below.



**OPERATING THE FIRE**

**Controls:** The fire can be operated either by manual or remote control. There is a **main on/off** switch top right of the fire, this is marked with **I/O** and will need to be switched to **I (standby)** to operate the fire. In the **O position (off)** you will be unable to operate the fire.

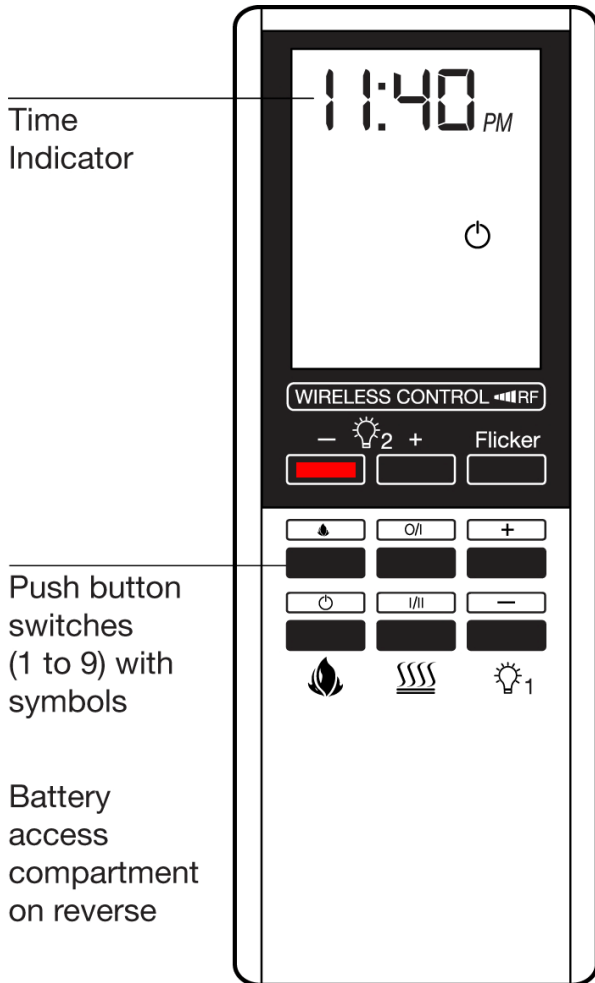


Fig. 3

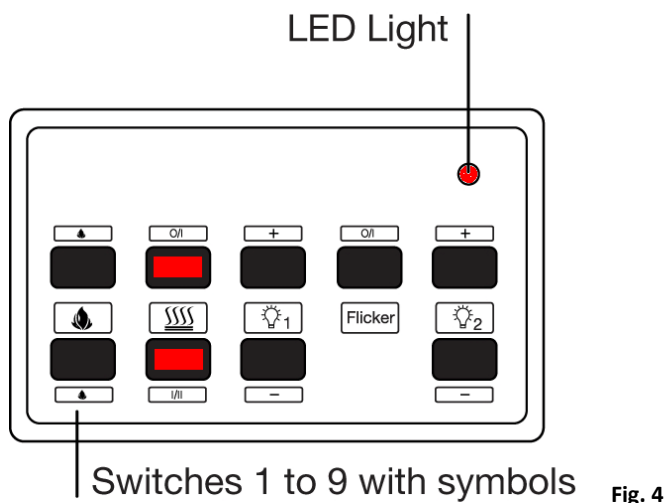


Fig. 4

1. To turn the fire on (**Fig. 3 and Fig. 4**), simply press and release the **FIRE ON** or button on the remote or manual keypad.
2. To set the inner flame & fuel effect to your desired brightness press + or - buttons marked **DIMMER1** or 1.
3. To set the outer flame & fuel effect to your desired brightness press + or - buttons marked **DIMMER2** or 2.
4. To activate or deactivate the outer flame & fuel flicker function press and release button **Flicker**. The flicker function will always deactivate once the fire is turned off.
5. To give 1kw of heat, press then release the button marked **ON/OFF HEAT** or **O/I**. To increase the temperature to 2kw press then release button marked **HI/LO** or **I/II**. You may alternate from 1kw to 2kw by pressing **HI/LO** or **I/II** at anytime. To turn the heater off, press then release the button marked **ON/OFF HEAT** **O/I**. The heater will always start in the lower setting
6. To turn the fire to standby press then release the button marked **FIRE OFF** or .
7. To turn the off depress the **main on/off** switch to the **O** position

#### External lighting Remote Control (RGB)

- These lights maybe turned on or off independently from the fire by pressing the buttons marked ON & OFF on the remote control.
- For the RGB remote to be affective it must be pointed at and upwards towards the top where the RGB lamps are situated. The working area is in a direct line of sight at the very front of the suite toward the lights. You may, depending on where the remote is pointed change one lamp at a time or both together.
- There are sixteen individual colours to choose from as well as the ability to mix and match using the pre-set or programmable fade and strobe functions. A dimmer is also present.

**Setting time on remote control:** On the remote control turn the fire off so the only symbol is . Hold down Flicker & lower 1 (-) buttons at the same time for three seconds and the hour will flash. Use 2 + or - buttons to set hour noting that there is an AM /PM suffix. Press Flicker again to move on to minutes and again use 2 + or - buttons. Finally press Flicker again to set the time.

**Automatic safety cut out:** The heater is fitted with an automatic cut out to prevent any damage due to overheating. The element will continually and automatically cut out if the airflow is obstructed. **Never** cover the air inlets or outlets. To reset, switch the fire off, disconnect from the mains supply, remove the cause of overheating and allow to cool for a suitable period then switch the fire back on. **Caution:** In order to avoid a hazard due to inadvertent resetting of the thermal cut out, the appliance must not be supplied through an external switching device, such as a timer, or connected to circuit regularly switched on and off by a utility.


**Areas around the fire will become hot when activated. We strongly recommend small children be kept away from having any direct contact with the appliance by means of fitting a fireguard. This appliance is not intended for use by persons (or children) with reduced physical sensory or mental capabilities or lack of experience or knowledge unless they have been given supervision or instruction concerning the use of the appliance by the person responsible for their safety. Children should be supervised to ensure they do not play with this appliance.**

## MAINTENANCE

**Before any maintenance/cleaning is undertaken, always disconnect the fire from the mains power supply.**

**Replacing Lamps** (Dimmable 240V 5W 3000k E14 LED lamps): Replacements are available from Flamerite Fires [info@flameritefires.com](mailto:info@flameritefires.com)  
Allow a suitable time for the lamps to cool then remove the fuel effect. Remove the two screws from either side of the fuel bed and lift out of place. Remove and replace the lamps, fuel bed, fuel effect and glass. Please note that replacement Lamps are only covered from purchase by a 2 year warranty

**Changing or matching remote frequency:** If you receive a replacement remote in cases of loss/damage or you need to change frequency you must follow a simple procedure to match the remote with the appliance.

1. Make sure the fire is plugged in at the mains, turned to standby (I on main on/off switch) and the LED on the manual keypad is lit **Fig. 4**.
2. On the manual keypad press and hold the heater on & heater Hi/Low buttons together (centre buttons) for 5 seconds and the LED will flash.
3. Press the  button on the remote control **Fig. 3**. The fire will turn on & off twice.  
The procedure is now complete and the fire is once again ready for use. (If there is no illumination, turn off main on/off switch and leave for one minute to reset software).

### **Changing battery in the remote**

Your remote has two batteries a CR2032 Lithium Battery and an alkaline MN21 12 Volt battery, replacements are available from Flamerite Fires stockists, most electrical or photographic stores. **Ensure battery is disposed of safely. Do not dispose of in fire, do not swallow and keep away from children.**

### **Cleaning**

The fire can be cleaned with a soft damp cloth and none abrasive glass cleaner.

### **Warnings**

- Do not use the fire in the vicinity of a bath shower or swimming pool.
- Never use the fire to dry laundry.
- Never install the fire directly underneath a fixed main socket.
- Never cover the appliance during the operation of the fire.
- The use of an extension lead is not recommended.
- Particular caution should be applied to ensure that children do not play with the fuel effects.
- As with any electrical appliance whilst the instructions aim to cover as many eventualities as possible, caution and common sense should be applied when operating your appliance, particularly in the vicinity of small children.

### **Problem solving**

- **No power to the fire:** Check the wall socket, plug, fuse and lamps.
- **No illumination:** Make sure fire is turned on. Check heater is working, if so check lamps.
- **Illumination but heater blowing cold:** The safety cut out may have operated. Check for obstruction around the heater. If installed into a chimney or cavity wall is 100% of drawn air blocked off from the fire.
- **Noise when illuminated:** Due to moving parts, the electric fire will make a noise.
- **Noise from the heater when in use:** The sound of rushing air is normal.